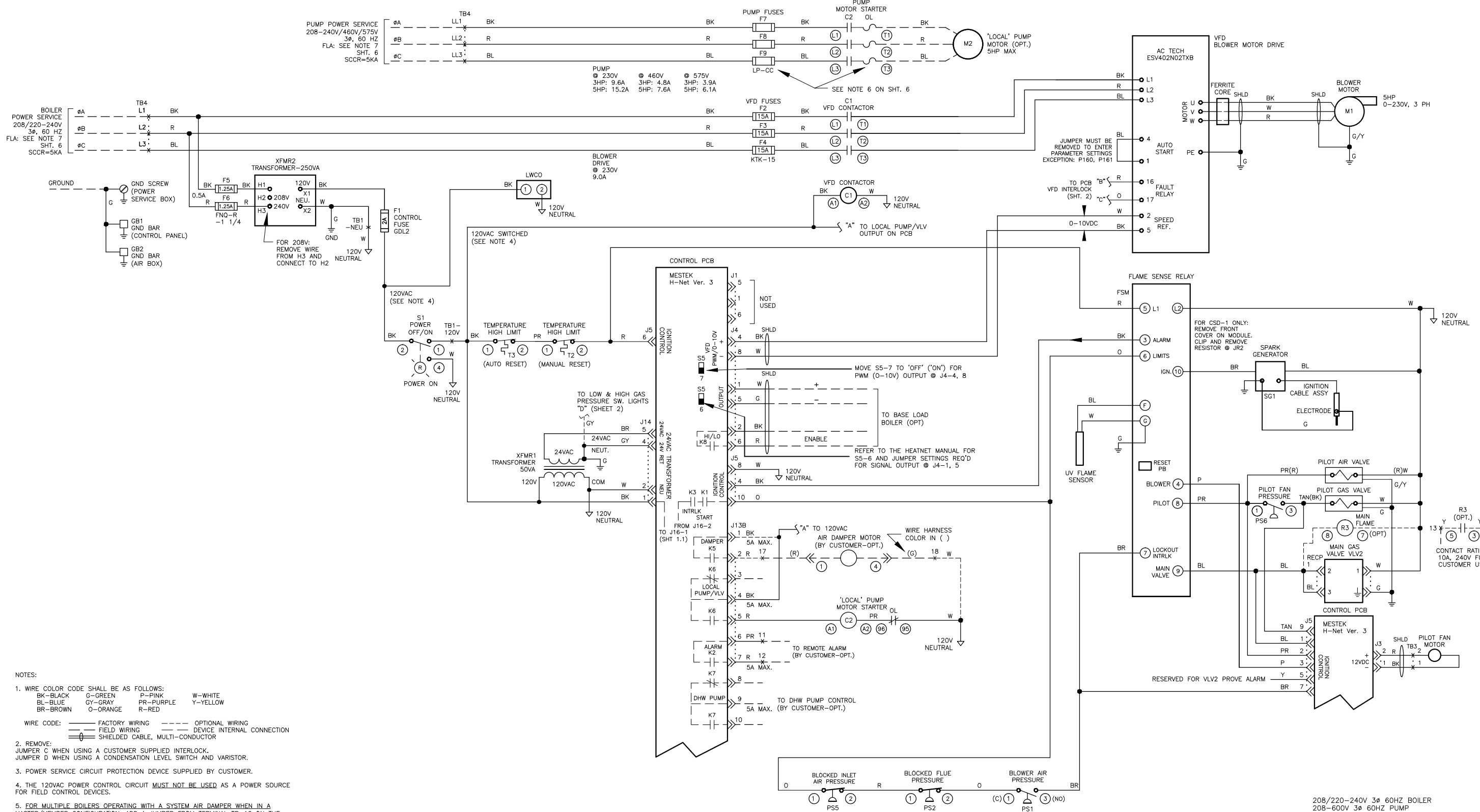


REVISIONS				
REV.	EN NO.	DATE	DRAWN BY	APPROVED
C	10754	12/01/16	LAH	JAS



- NOTES:
- WIRE COLOR CODE SHALL BE AS FOLLOWS:
 BK-BLACK G-GREEN P-PINK W-WHITE
 BL-BLUE GY-GRAY PR-PURPLE Y-YELLOW
 BR-BROWN O-ORANGE R-RED
 - WIRE CODE: ——— FACTORY WIRING - - - - - OPTIONAL WIRING
 ——— FIELD WIRING - - - - - DEVICE INTERNAL CONNECTION
 ——— SHIELDED CABLE, MULTI-CONDUCTOR
 - REMOVE:
 JUMPER C WHEN USING A CUSTOMER SUPPLIED INTERLOCK.
 JUMPER D WHEN USING A CONDENSATION LEVEL SWITCH AND VARISTOR.
 - POWER SERVICE CIRCUIT PROTECTION DEVICE SUPPLIED BY CUSTOMER.
 - THE 120VAC POWER CONTROL CIRCUIT MUST NOT BE USED AS A POWER SOURCE FOR FIELD CONTROL DEVICES.
 - FOR MULTIPLE BOILERS OPERATING WITH A SYSTEM AIR DAMPER WHEN IN A MASTER/MEMBER CONFIGURATION: ADD A JUMPER FROM TERMINAL TB-16 ON THE MASTER BOILER TO TERMINAL TB-16 ON ALL MEMBER BOILERS.
 - 7 ---
 - HEATNET ONLINE, STAGE 2, 3, 4 AND SYSTEM PUMP 2 OUTPUTS ARE NOT AVAILABLE WITH THE H-NET "LITE" CONTROL PCB.

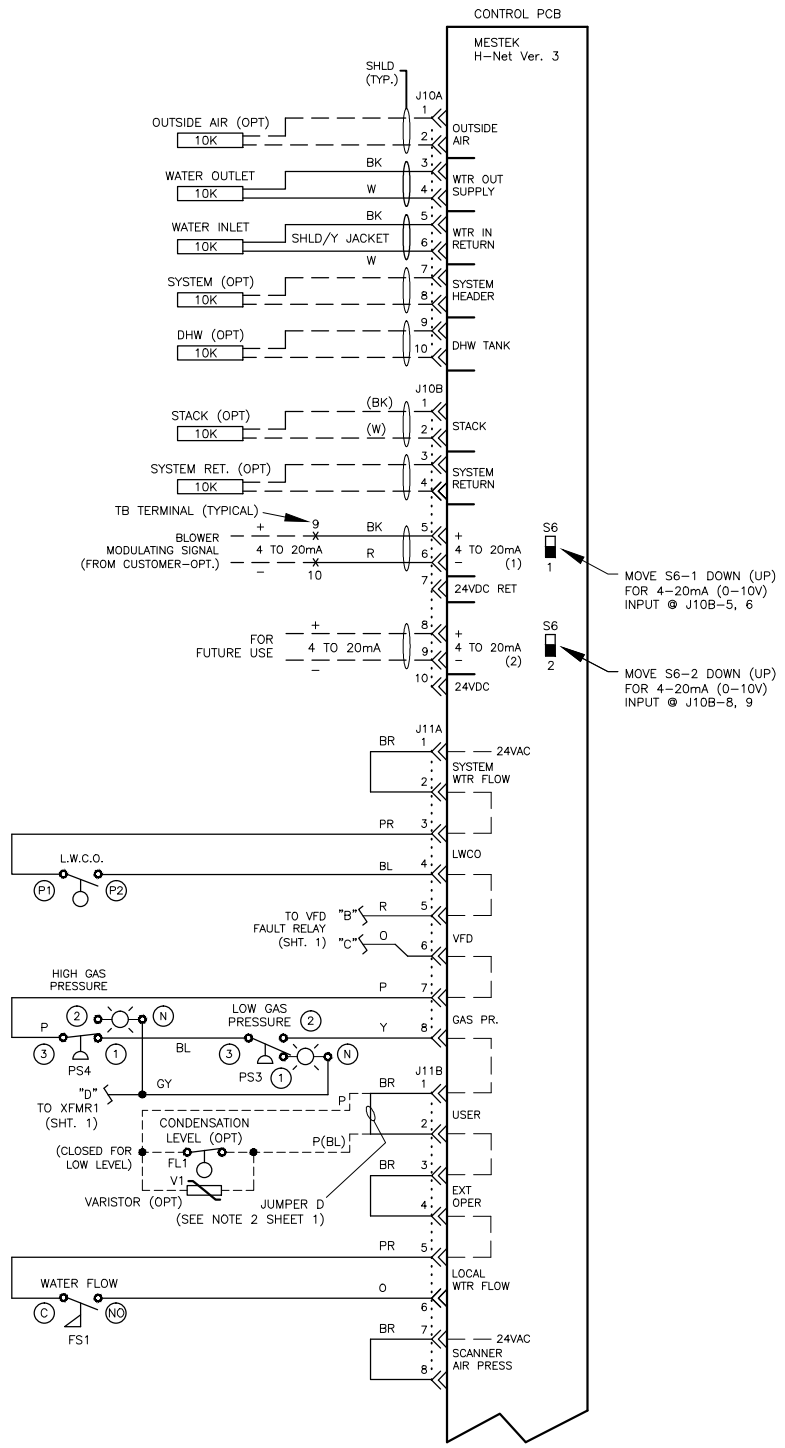
DIVISION	PRODUCT	DRAWN BY	DATE	DRAWING DESCRIPTION		
RBI	MB & MW 5000	RT	08/28/14	LADDER DIAGRAM		
THE PRINT AND ALL INFORMATION THEREON IS PROPERTY OF THE RBI DIVISION OF MESTEK, INC. NEITHER THE PRINT NOR THE INFORMATION THEREON MAY BE REPRODUCED OR USED IN ANY MANNER WHATSOEVER OR DIVULGED TO ANY OTHER PERSON UNLESS SPECIFICALLY AUTHORIZED BY MESTEK, INC.		CHECKED BY	DATE	DRAWING NUMBER		
		RT	08/28/14	42-0622		
APPROVED BY	DATE	SHEET	SHEET SIZE	SCALE	REVISION	
JPC	08/28/14	1 of 6	B	N/A	C	

D
C
B
A

D
C
B
A

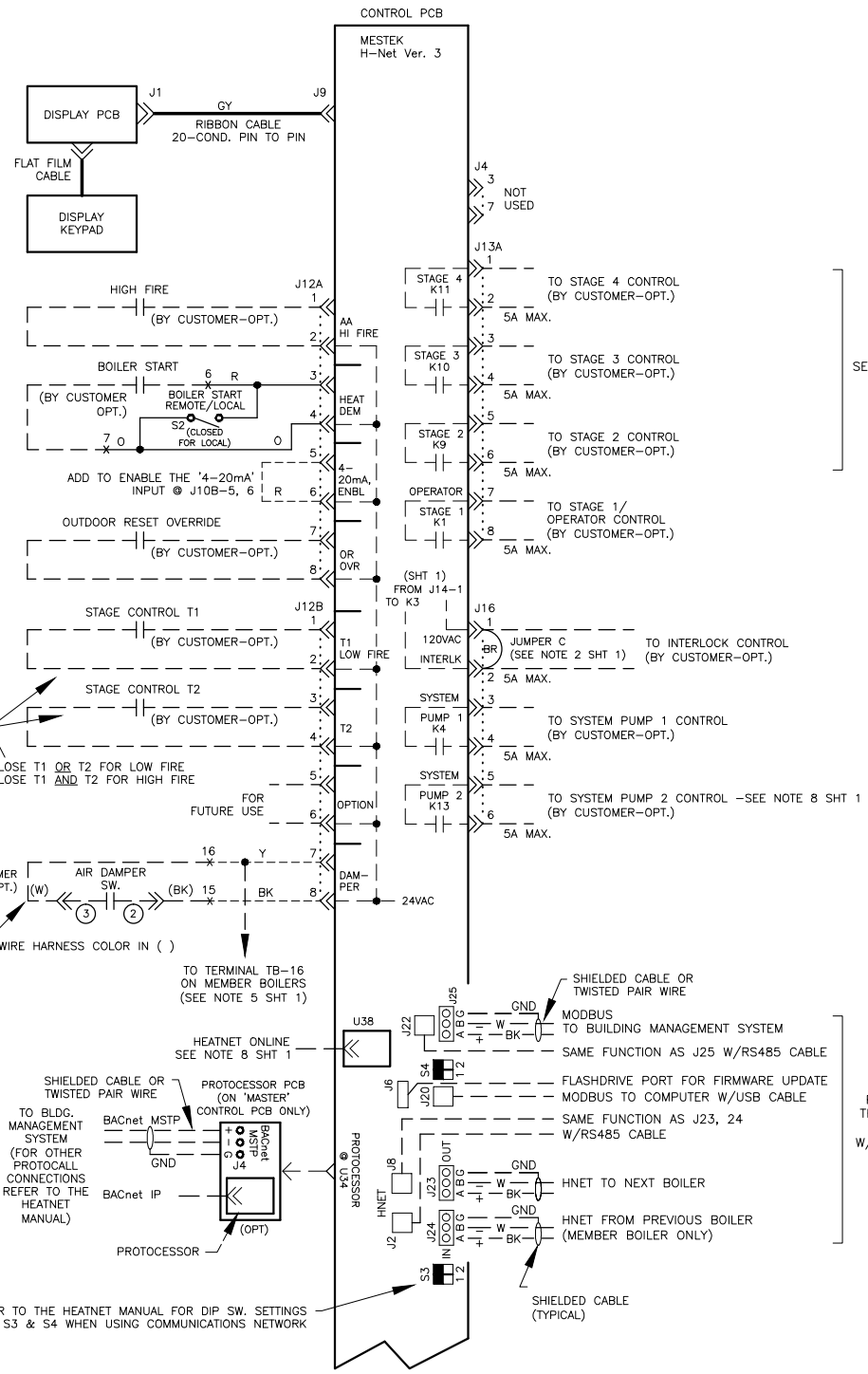
TEMPERATURE SENSORS
(10K THERMISTOR INPUTS)

INTERLOCKS
(DRY CONTACT OR JUMPER INPUTS)



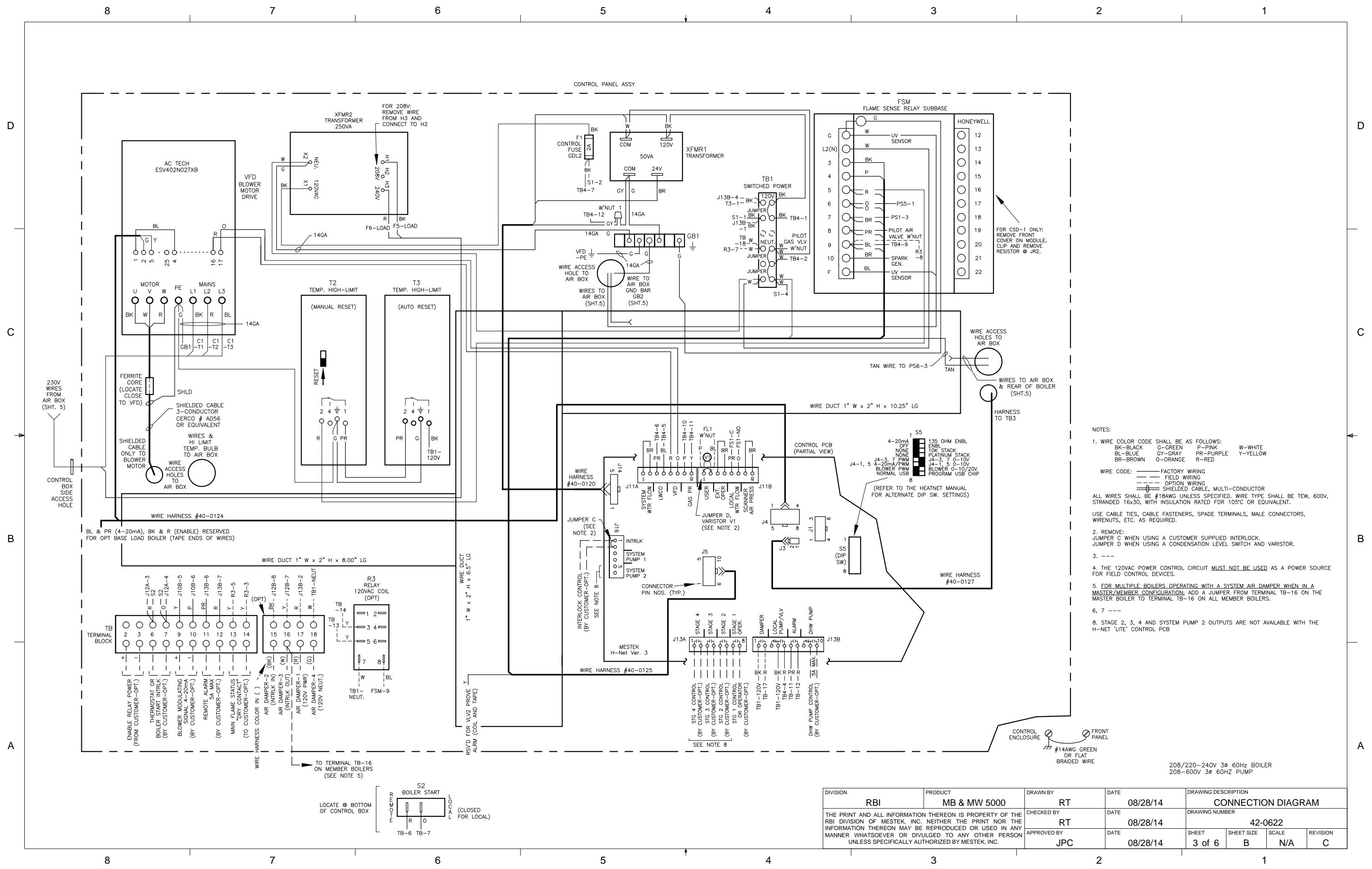
STAGE CONTROL
(DRY CONTACT OR JUMPER INPUTS)

HEATNET COMMUNICATIONS
(OPTIONAL)



208/220-240V 3Ø 60HZ BOILER
208-600V 3Ø 60HZ PUMP

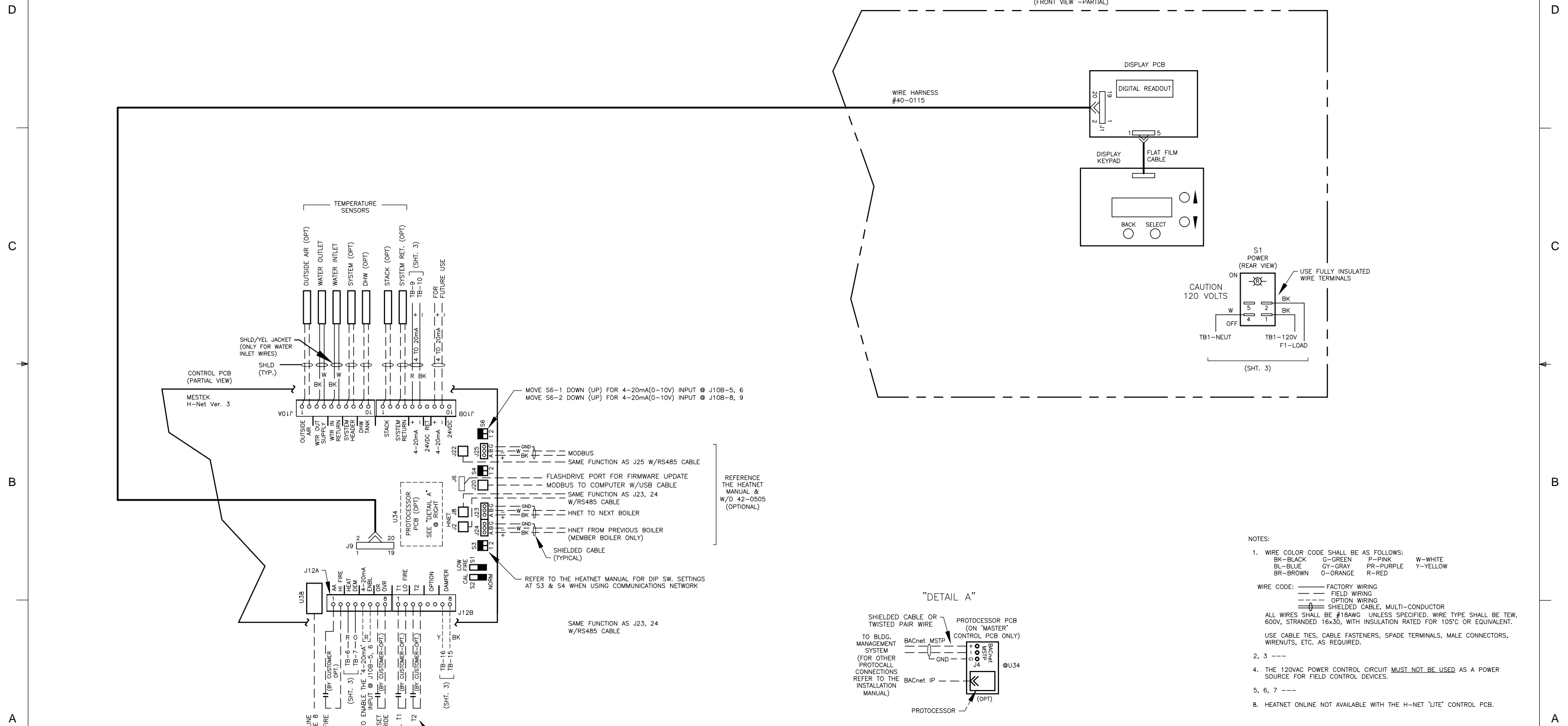
DIVISION	PRODUCT	DRAWN BY	DATE	DRAWING DESCRIPTION			
RBI	MB & MW 5000	RT	08/28/14	LADDER DIAGRAM			
THE PRINT AND ALL INFORMATION THEREON IS PROPERTY OF THE RBI DIVISION OF MESTEK, INC. NEITHER THE PRINT NOR THE INFORMATION THEREON MAY BE REPRODUCED OR USED IN ANY MANNER WHATSOEVER OR DIVULGED TO ANY OTHER PERSON UNLESS SPECIFICALLY AUTHORIZED BY MESTEK, INC.			CHECKED BY	DATE	DRAWING NUMBER		
			RT	08/28/14	42-0622		
APPROVED BY	DATE	SHEET	SHEET SIZE	SCALE	REVISION		
JPC	08/28/14	2 of 6	B	N/A	C		



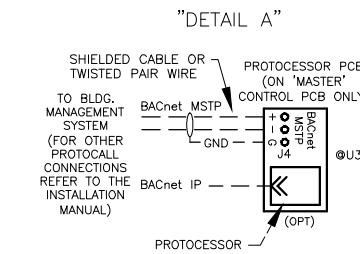
- NOTES:
1. WIRE COLOR CODE SHALL BE AS FOLLOWS:
 BK-BLACK G-GREEN P-PINK W-WHITE
 BL-BLUE GY-GRAY PR-PURPLE Y-YELLOW
 BR-BROWN O-ORANGE R-RED
 2. REMOVE JUMPER C WHEN USING A CUSTOMER SUPPLIED INTERLOCK. JUMPER D WHEN USING A CONDENSATION LEVEL SWITCH AND VARISTOR.
 3. ---
 4. THE 120VAC POWER CONTROL CIRCUIT MUST NOT BE USED AS A POWER SOURCE FOR FIELD CONTROL DEVICES.
 5. FOR MULTIPLE BOILERS OPERATING WITH A SYSTEM AIR DAMPER WHEN IN A MASTER/MEMBER CONFIGURATION: ADD A JUMPER FROM TERMINAL TB-16 ON THE MASTER BOILER TO TERMINAL TB-16 ON ALL MEMBER BOILERS.
 - 6, 7 ---
 8. STAGE 2, 3, 4 AND SYSTEM PUMP 2 OUTPUTS ARE NOT AVAILABLE WITH THE H-NET "LITE" CONTROL PCB
- WIRE CODE:
 — FACTORY WIRING
 - - - FIELD WIRING
 - - - OPTION WIRING
 ⊕ SHIELDED CABLE, MULTI-CONDUCTOR
- ALL WIRES SHALL BE #18AWG UNLESS SPECIFIED. WIRE TYPE SHALL BE TEW, 600V, STRANDED 16x30, WITH INSULATION RATED FOR 105°C OR EQUIVALENT.
- USE CABLE TIES, CABLE FASTENERS, SPADE TERMINALS, MALE CONNECTORS, WIRENUTS, ETC. AS REQUIRED.

208/220-240V 3ø 60HZ BOILER
 208-600V 3ø 60HZ PUMP

DIVISION	PRODUCT	DRAWN BY	DATE	DRAWING DESCRIPTION		
RBI	MB & MW 5000	RT	08/28/14	CONNECTION DIAGRAM		
THE PRINT AND ALL INFORMATION THEREON IS PROPERTY OF THE RBI DIVISION OF MESTEK, INC. NEITHER THE PRINT NOR THE INFORMATION THEREON MAY BE REPRODUCED OR USED IN ANY MANNER WHATSOEVER OR DIVULGED TO ANY OTHER PERSON UNLESS SPECIFICALLY AUTHORIZED BY MESTEK, INC.		CHECKED BY	DATE	DRAWING NUMBER		
		RT	08/28/14	42-0622		
APPROVED BY	DATE	SHEET	SHEET SIZE	SCALE	REVISION	
JPC	08/28/14	3 of 6	B	N/A	C	



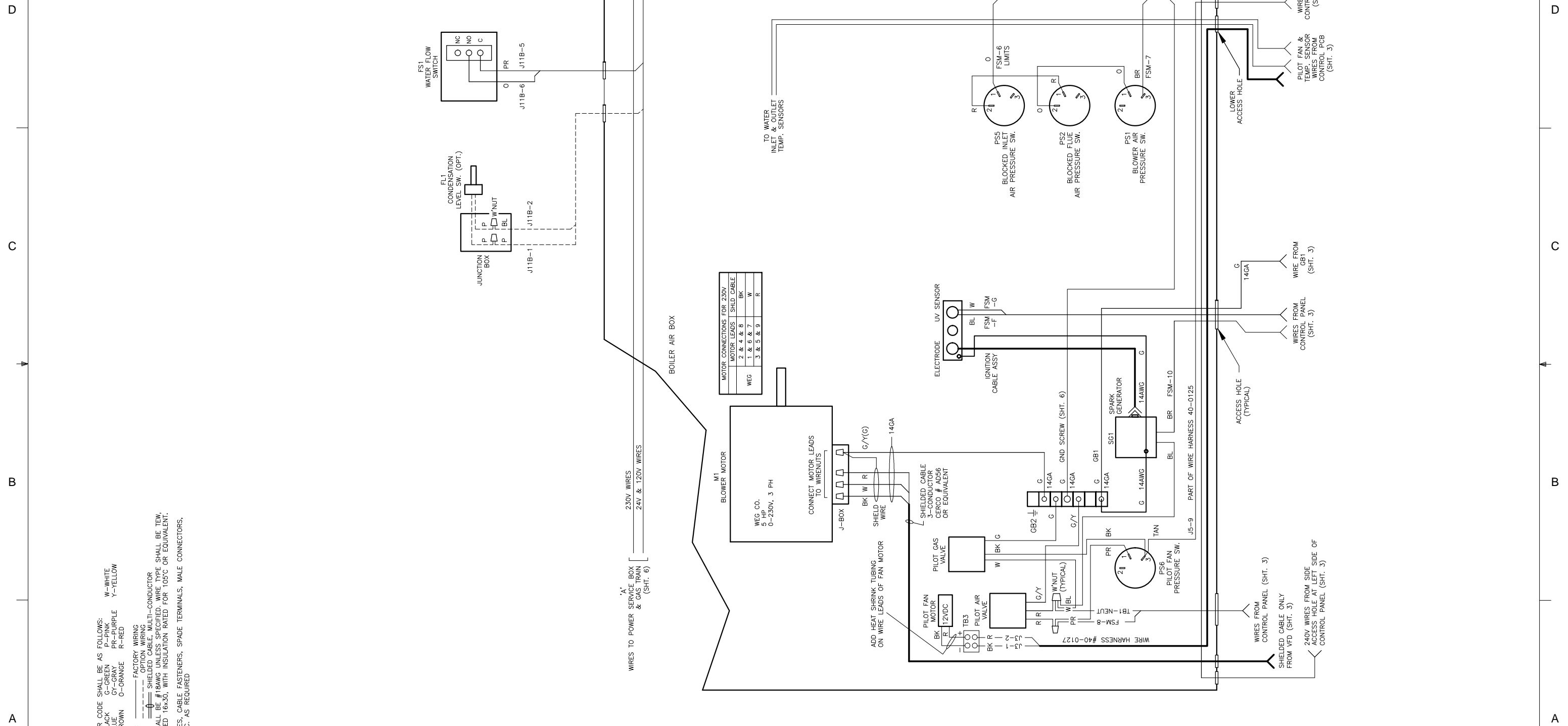
REFERENCE THE HEATNET MANUAL & W/D 42-0505 (OPTIONAL)



- NOTES:
- WIRE COLOR CODE SHALL BE AS FOLLOWS:
 BK-BLACK G-GREEN P-PINK W-WHITE
 BL-BLUE GR-GRAY PR-PURPLE Y-YELLOW
 BR-BROWN O-ORANGE R-RED
 - WIRE CODE: --- FACTORY WIRING
 --- FIELD WIRING
 --- OPTION WIRING
 --- SHIELDED CABLE, MULTI-CONDUCTOR
 - ALL WIRES SHALL BE #18AWG UNLESS SPECIFIED. WIRE TYPE SHALL BE TEW, 600V, STRANDED 16x30, WITH INSULATION RATED FOR 105°C OR EQUIVALENT.
 - USE CABLE TIES, CABLE FASTENERS, SPADE TERMINALS, MALE CONNECTORS, WIRENUTS, ETC. AS REQUIRED.
 - THE 120VAC POWER CONTROL CIRCUIT **MUST NOT BE USED** AS A POWER SOURCE FOR FIELD CONTROL DEVICES.
 - HEATNET ONLINE NOT AVAILABLE WITH THE H-NET 'LITE' CONTROL PCB.

208/220-240V 3Ø 60HZ BOILER
 208-600V 3Ø 60HZ PUMP

DIVISION	RBI	PRODUCT	MB & MW 5000	DRAWN BY	RT	DATE	08/28/14	DRAWING DESCRIPTION			
				CHECKED BY	RT	DATE	08/28/14	CONNECTION DIAGRAM			
				APPROVED BY	JPC	DATE	08/28/14	DRAWING NUMBER			
								42-0622			
				SHEET	4 of 6	SHEET SIZE	B	SCALE	N/A	REVISION	C



MOTOR CONNECTIONS FOR 230V	
MOTOR LEADS	SHLD CABLE
WEG	BK
1 & 6 & 7	W
3 & 5 & 9	R

NOTES:

1. WIRE COLOR CODE SHALL BE AS FOLLOWS:
 W--WHITE
 BK--BLACK
 G--GREEN
 CY--GRAY
 BL--BLUE
 BR--BROWN
 O--ORANGE
 P--PINK
 PR--PURPLE
 R--RED
 Y--YELLOW

WIRE CODE:
 --- FACTORY WIRING
 --- OPTION WIRING

ALL WIRES SHALL BE #18AWG UNLESS SPECIFIED. WIRE TYPE SHALL BE TEV, 600V, STRANDED 16X30, WITH INSULATION RATED FOR 105°C OR EQUIVALENT. USE CABLE TIES, CABLE FASTENERS, SPADE TERMINALS, MALE CONNECTORS, WIRENUTS, ETC. AS REQUIRED

208/220-240V 3Ø 60Hz BOILER
 208-600V 3Ø 60Hz PUMP

DIVISION	PRODUCT	DRAWN BY	DATE	DRAWING DESCRIPTION	
RBI	MB & MW 5000	RT	08/28/14	CONNECTION DIAGRAM	
THE PRINT AND ALL INFORMATION THEREON IS PROPERTY OF THE RBI DIVISION OF MESTEK, INC. NEITHER THE PRINT NOR THE INFORMATION THEREON MAY BE REPRODUCED OR USED IN ANY MANNER WHATSOEVER OR DIVULGED TO ANY OTHER PERSON UNLESS SPECIFICALLY AUTHORIZED BY MESTEK, INC.			CHECKED BY	DATE	DRAWING NUMBER
			RT	08/28/14	42-0622
APPROVED BY	DATE	SHEET	SHEET SIZE	SCALE	REVISION
JPC	08/28/14	5 of 6	B	N/A	C

7. POWER SERVICE AS FOLLOWS:
 FLA FOR BOILER: 9.5A @ 230V, 3Ø
 FLA FOR 'LOCAL' PUMP MOTOR:

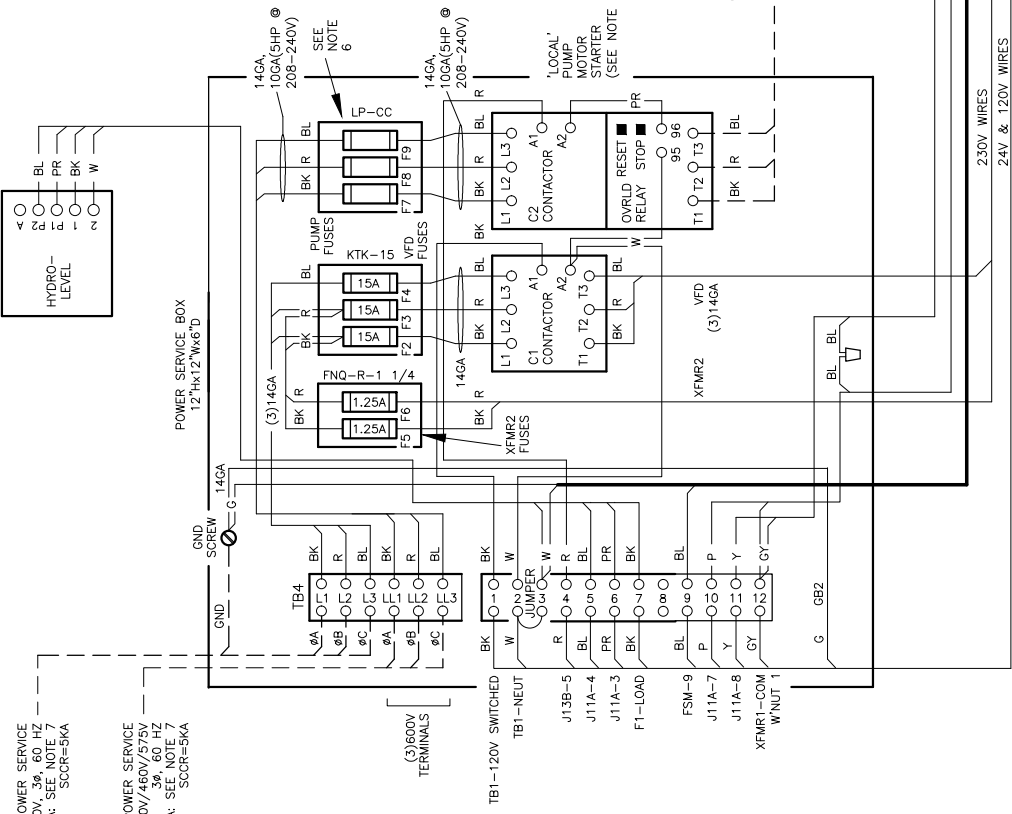
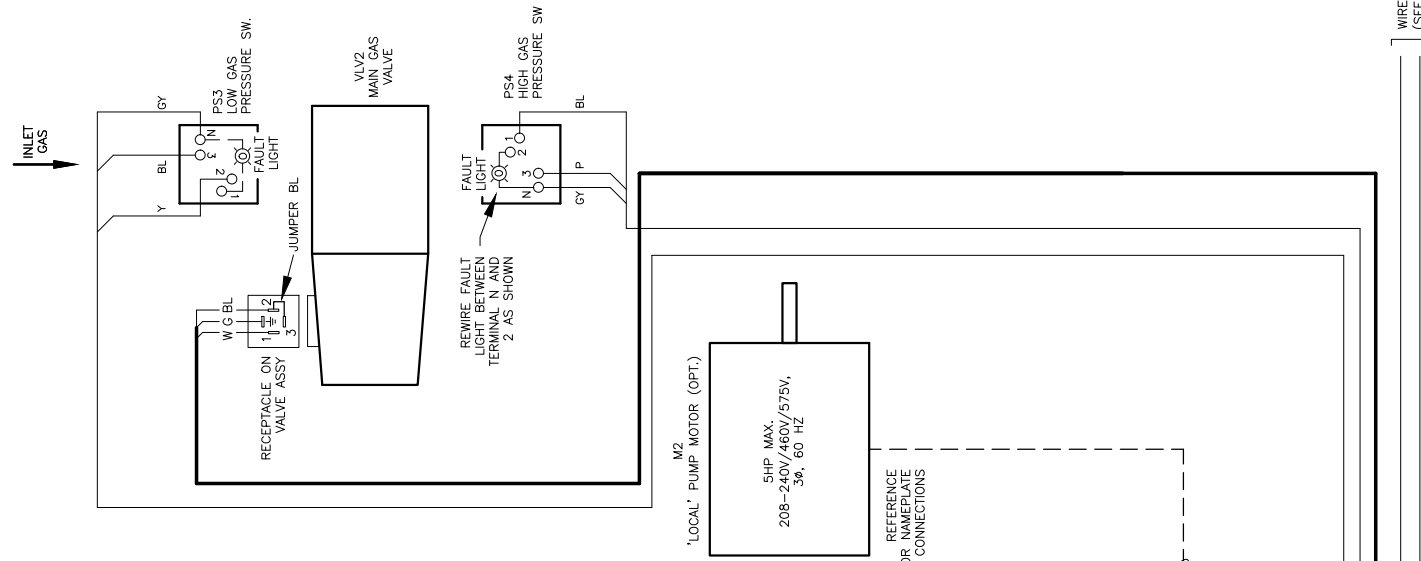
PUMP HP	230V, 3Ø	460V, 3Ø	575V, 3Ø
3	9.6A	4.8A	3.9A
5	15.2A	7.6A	6.1A

'LOCAL' PUMP FLA ARE BASED ON THE FLA RATINGS FOR 3Ø AC INDUCTION MOTORS AS LISTED IN ARTICLE 430 OF THE NATIONAL ELECTRICAL CODE.

NOTES:
 1. ALL WIRES SHALL BE #18AWG UNLESS SPECIFIED. WIRE TYPE SHALL BE TEW, 600V, STRANDED 16x30, WITH INSULATION RATED FOR 105°C OR EQUIVALENT.
 WIRE COLOR SHALL BE AS FOLLOWS:
 BK-BLACK P-PINK W-WHITE
 BK-BLACK C-GREEN R-RED
 BL-BLUE GY-GRAY PR-PURPLE Y-YELLOW
 BR-BROWN O-ORANGE R-RED
 WIRE CODE: --- FACTORY WIRING --- FIELD WIRING
 --- OPTION WIRING
 USE CABLE TIES, CABLE STRAPPERS, SPADE TERMINALS, MALE CONNECTORS, WIRENUTS, ETC. AS REQUIRED.
 2. ---
 3. POWER SERVICE CIRCUIT PROTECTION DEVICE SUPPLIED BY CUSTOMER.
 4, 5 ---
 6. 'LOCAL' PUMP MOTOR CONTACTOR, OVERLOAD RELAY AND FUSE PART NOS. PER THE FOLLOWING:

PUMP HP	208-240V, 3Ø	460V, 3Ø	575V, 3Ø
CONTACTOR SCHNEIDER ELECT.	LC1D12G7	LC1D09G7	LC1D09G7
OVERLOAD SCHNEIDER ELECT.	LRD16 (9-13A) LRD21 (12-18A)	LRD10 (4-6A) LRD12 (5.5-8A)	LRD08 (2.5-4A) LRD12 (5.5-8A)
PUMP FUSE EQUIVALENT	LP-CC-15 LP-CC-25	LP-CC-7 LP-CC-12	LP-CC-6 LP-CC-10

PART NOS. ARE BASED ON THE FLA RATINGS FOR 3Ø AC INDUCTION MOTORS AS LISTED IN ARTICLE 430 OF THE NATIONAL ELECTRICAL CODE.



1' WIRES FROM AIR BOX (SEE SHEET 5)

208/220-240V 3Ø 60Hz BOILER
 208-600V 3Ø 60HZ PUMP

DIVISION	PRODUCT	DRAWN BY	DATE	DRAWING DESCRIPTION		
RBI	MB & MW 5000	RT	08/28/14	CONNECTION DIAGRAM		
THE PRINT AND ALL INFORMATION THEREON IS PROPERTY OF THE RBI DIVISION OF MESTEK, INC. NEITHER THE PRINT NOR THE INFORMATION THEREON MAY BE REPRODUCED OR USED IN ANY MANNER WHATSOEVER OR DIVULGED TO ANY OTHER PERSON UNLESS SPECIFICALLY AUTHORIZED BY MESTEK, INC.		CHECKED BY	DATE	DRAWING NUMBER		
		RT	08/28/14	42-0622		
APPROVED BY	DATE	SHEET	SHEET SIZE	SCALE	REVISION	
JPC	08/28/14	6 of 6	B	N/A	C	